

< **GO4**LOGISTICS >

# GO4TMS

## CAPABILITY GUIDE



## Table of Contents

Welcome to the Go4TMS Capability Guide .....	1
Transport Management.....	1
Order Management .....	2
Planning .....	3
Execution .....	4
Invoicing.....	5
Accounting.....	6
Reporting .....	6
General Capabilities .....	7
Contact us.....	8

<b>Date</b>	<b>26/09/2023</b>
<b>Version</b>	<b>v.22.4</b>
<b>Title</b>	<b>Go4TMS</b>
<b>Subtitle</b>	<b>Capability Guide</b>
<b>Owner</b>	<b>Go4Logistics NV</b>
<b>Author</b>	<b>Joeri Lyssens</b>



# WELCOME TO THE GO4TMS CAPABILITY GUIDE

This guide provides a high-level overview of the capabilities within Go4TMS, the transport management solution (TMS) to control all operational and financial aspects of a modern transport business. With Go4TMS you navigate from quote to cash with complete functionalities and ensure the efficient execution of transports by road, rail, barge, air, and sea.

## TRANSPORT MANAGEMENT

### Contact Management

Maintain an overview of your contacts and personalize your interactions with each one. Record contact information for all business relationships, and specify the individual people related to each contact.

### Pricing Agreements

Centrally manage customers and suppliers, define your commitments, and register pricing agreements in a structured manner.

### Optimize Handling

Seamlessly integrate vital information into your administrative and operational processes, optimizing the handling of orders.

### Transport Information

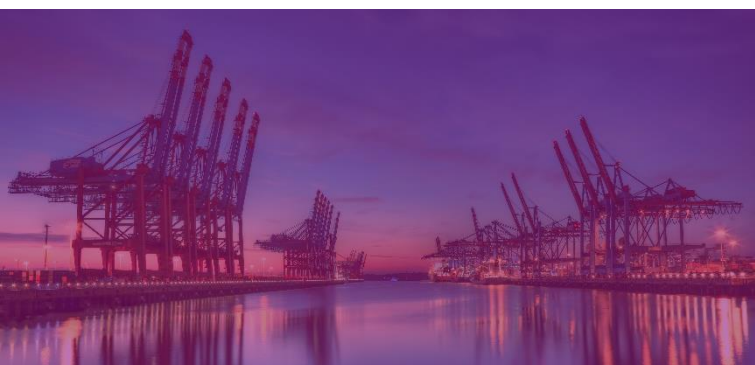
Register all relevant transport information like cargo, addresses, and materials. Add opening hours, geo-coordinates, and equipment requirements to loading- and unloading addresses, terminals, and warehouses.

### Define Details

Define units of measure, ADR, or temperature details on cargo. Keep real-time balances for materials such as exchange pallets, racks, and straps on each customer, supplier, or transport address.

### Manage Resources

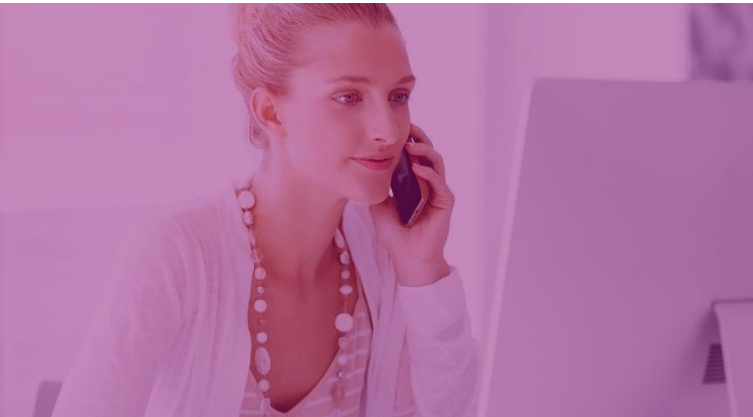
Manage all transport equipment like trucks, trailers, chassis, containers, and other equipment centrally. Register all relevant HR and operational data for drivers and other employees. Assign resources to planning departments, create and maintain licenses or register unavailabilities.



## ORDER MANAGEMENT

### Order Import

Import transport orders automatically, fast, and error-free through the standard order import integration. Through the web portal, enable customers to place and track orders effortlessly.



### Tradelanes

Automate order entry by leveraging tradelanes or model assignments. Easily set up recurrence patterns on tradelanes to automate system-generated orders at specified intervals. Add relevant information like addresses, cargo details, customer remarks and required equipment.

### Intermodal

Optimize sailing schedules, manage bookings, and streamline invoicing for ferries, rail, air, and barge transports.

### Quotes

Quickly and efficiently prepare a quote and automatically send it to your customer. When the customer agrees, convert the quote into an order, without any additional manual action. Monitor the performance of the sales team.

### Statuses

Ensure data accuracy and completeness with an extensive system of operational and financial statuses, facilitating checks and warnings for missing or incorrect information.

### Document Management

Link any received or outgoing documents (email assignments, CMRs, order confirmations...) to the correct order and store them in and easily retrieve them from the system.

### Communication

Automate document creation and background email sending, minimizing manual intervention.

## PLANNING

### Multiple Visualizations

Choose from different visual overviews of available resources and pending orders. Experience the freedom to view your schedule not just by day, but by a full week or an even extended time frame, based on your specific needs.

### Order Specifics

With all essential information consolidated in one location, access all pertinent details effortlessly. From order specifics to cargo details or equipment information, everything you need is at your fingertips, including all relevant transport documents.

### Timeline

Choose from a wide selection of intuitive planning tools to streamline the planning workflow, including drag-and-drop functionality, easy-to-use filters, a convenient timeline, and a color-coded status indicator for orders.

### Combinations

Benefit from smart suggestions the planning tool is able to make and create the best combinations of delivery and pickup locations to minimize empty kilometers.

### Alerts

Stay on top of your game with real-time alerts, promptly notifying you of any planning conflicts on agreed time frames, required licenses, order specifics or equipment overloads.

### Truck & Driver Availability

Register and display truck activities like maintenance or repair in the planning agendas. In the same way, schedule, and display driver absences.



## EXECUTION

### Mobile Application

Connect with onboard computers or mobile apps from your own drivers and the drivers of your subcontractors, allowing them to execute transport orders from their android or IOS device.

### Track & Trace

Receive real-time feedback on deliveries, including proof of delivery documents or signatures on glass and monitor planned kilometers and driving time against actual reported data.

### Optimize Routes

Integrate with a route optimization tool to get the most efficient route automatically proposed, so the planners can devote their attention to improving other aspects of the transport.

### Register Costs

Record spot rates, waiting hours, and other essential costs, including mileage tax, péage, maut, ADR, administrative costs, and extra places, automatically during execution. Capture and divide revenues to ensure precise and comprehensive financial tracking.

### Calculate Profit

Automatically link correct customer and subcontractor contracts, encompassing price tables, rates, trade lanes, and model orders, continuously providing real-time understanding of the financial consequences of a change in the planning.

### Notifications

Register and process notifications for everything that doesn't go according to plan, like delays, missing cargo, or damages. Send relevant info about these notifications to customers or subcontractors.





## INVOICING

### Flexible

Determine the frequency at which you invoice and benefit from the flexible report layout options to easily produce sales invoices or sales credit memos according to customer specific requirements.

### Accurate

With rates set automatically by the system, quickly and accurately create the required invoice with just a few clicks. Go for a fully automated invoicing process or incorporate an additional verification step for added control.

### Document Check

Have the system check on the presence of required documents (CMR, POD, ...) and automatically attach them upon print or sending electronically per email.

### OCR Recognition

Entirely eliminate the manual work of matching purchase invoices with the powerful OCR recognition tools from Continia Document Capture and easily automate the process of approving, booking, and retrieving previously processed documents.

### Invoice Proposals

Match external costs on subcontractors' invoices with (automatically or manually) registered costs on transport orders or send invoicing proposals with a pre-invoicing list, that is easy to incorporate upon receipt of the purchase invoice.

## ACCOUNTING

### Integrated Accounting

Upon posting invoices or credit memos, automatically generate the correct general ledger entries in the integrated Microsoft Dynamics 365 Business Central accounting module.

### General Ledger

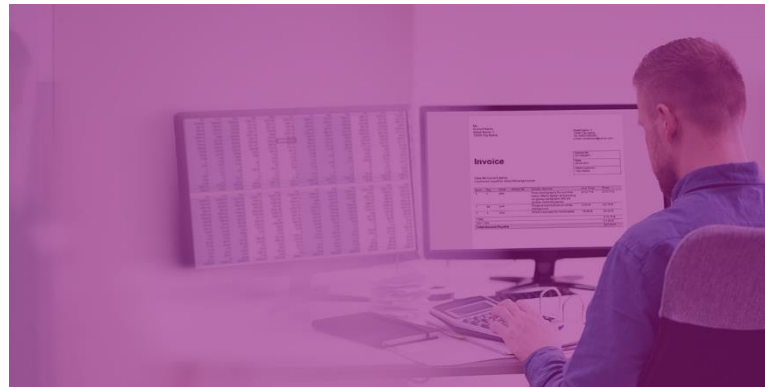
Gain access to all relevant accounting functionalities like general ledger, sales management, VAT statements, deferrals, and consolidation, all integrated in one powerful system.

### Microsoft Dynamics 365 Business Central

Benefit from the full capabilities of Business Central and manage cash flow, bank reconciliations, and fixed assets. Connect other departments to work smarter, adapt faster, and perform better.

### Export Accounting

Alternatively, export generated invoices and credit memos to your legacy accounting system for further treatment by your accountant. Grant your external accountant access to the system at no additional cost.



## REPORTING

### Built-in Reports

Use built-in reports and unlimited data dimensions to get real-time cash flow, identify financial patterns, analyze trends, and improve business planning.

### Export to Excel

Open data in Excel from any journal, list, or worksheet and simply create your own reports, graphs, and pivot tables to present the information the way you want it.

### Real-time KPI's

Access business intelligence when and where you need it, with real-time dashboards and KPIs for each user.

### Power BI Dashboards

Harmonize information from diverse origins by integrating data not only from your TMS but also from other sources like ERP systems, CRM systems, onboard computer solutions, WMS, financial packages, and more.



## GENERAL CAPABILITIES

### Work from Anywhere

Work wherever your business takes you, via any web browser, with full capabilities on desktop, tablet, or mobile.

### Fully Customizable

Customize your system to fit your unique requirements and tailor screen overviews for specific users or user groups. Experience the ease of navigation as you seamlessly glide through various screens of the integrated solution.

### Easy Integration

Seamlessly integrate (EDI, API, ...) with an array of essential business systems. From onboard computers to WMS systems, route optimization tools, EAM platforms, OCR solutions, and more, the system effortlessly collaborates with other components of your business ecosystem. Link your business data with productivity tools such as Microsoft Outlook and Excel to improve the customer and employee experience.

### Extensions

Get purpose-driven extensions like Continia Document Management from AppSource, Microsoft's business applications marketplace, to meet your unique requirements.

### Workflows

Optimize performance using easy-to-create workflows, customizable Microsoft Power Apps and Power Automate templates, audit trails, enterprise-level security, and AI.

### Expandable

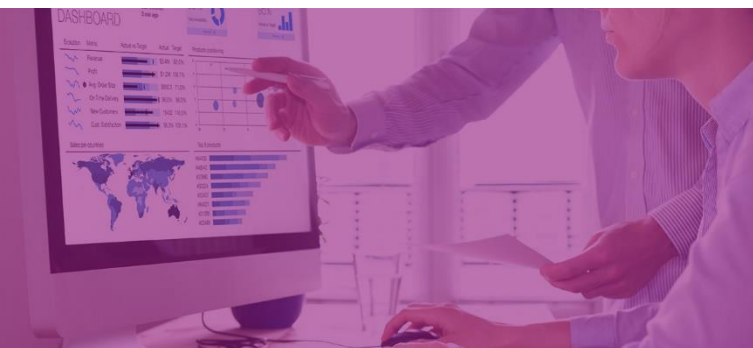
Use Business Central in more than 130 countries and regions, with support for multiple currencies, exchange rates, consolidations, intercompany transactions, and localized tax regulations.

### Data Protection

Protect your organization's data with multi-layered security features. Ensure that sensitive information remains secure with role-based access controls and encrypted data storage.

### Automatic Updates

Keep your business up to date with the latest features and security patches with 2 major and 10 minor automatic updates per year.



## CONTACT US

-  Go4Logistics NV  
'Atlantic House'  
Noorderlaan 147/30  
2030 Antwerp  
Belgium
-  +32 3 443 12 15
-  [info@go4logistics.be](mailto:info@go4logistics.be)
-  [www.go4logistics.be](http://www.go4logistics.be)

### About the author:



Joeri Lyssens is the CTO and founding father of Go4Logistics.

He founded Go4Logistics in 2010 to develop and deliver software solutions for the transport industry that set new standards and exceed customer expectations.

"The best product you can find ever", that was Joeri's vision and that remains the ambition of Go4Logistics to this day, every day.

With a far-reaching focus on customer satisfaction, Go4Logistics delivers transport companies innovative and reliable IT solutions and launches them on a journey towards a future without concerns about IT.

This document is for informational purposes only. Go4Logistics NV makes no warranties, express or implied, in this summary. This document is provided "as-is." Information and views expressed in this document, including URL and other Internet website references, may change without notice. This document does not provide you with any legal rights to any intellectual property in any Go4Logistics NV product. You may copy and use this document for internal reference purposes.